

# UIUC Waste Disposal Decision Guide

## What items are covered by this guide:

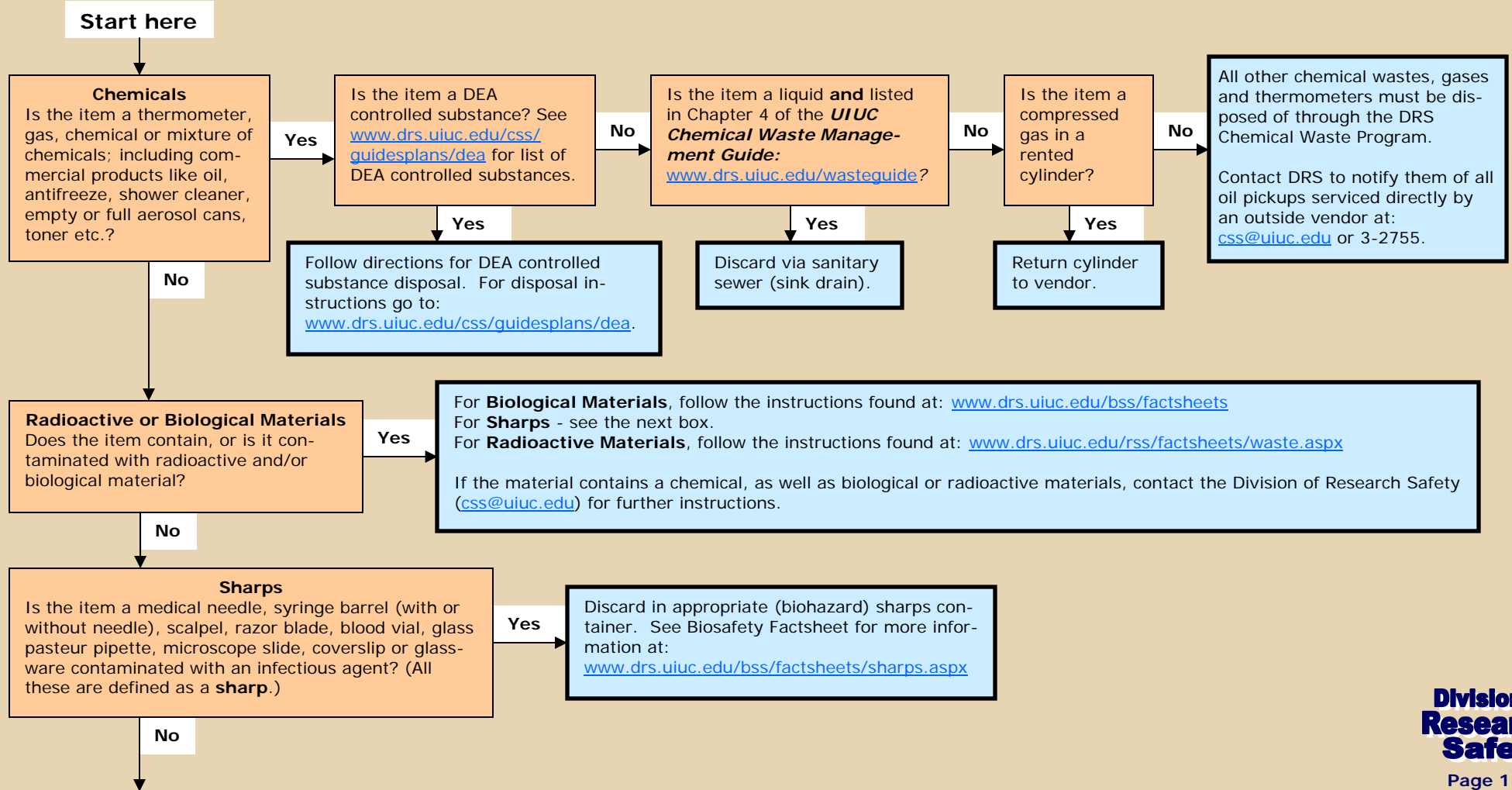
All items that are not completely made of paper, plastic, cardboard or food and items that contain or are contaminated with materials that are not paper, plastic, cardboard or food.

## How to use the guide:

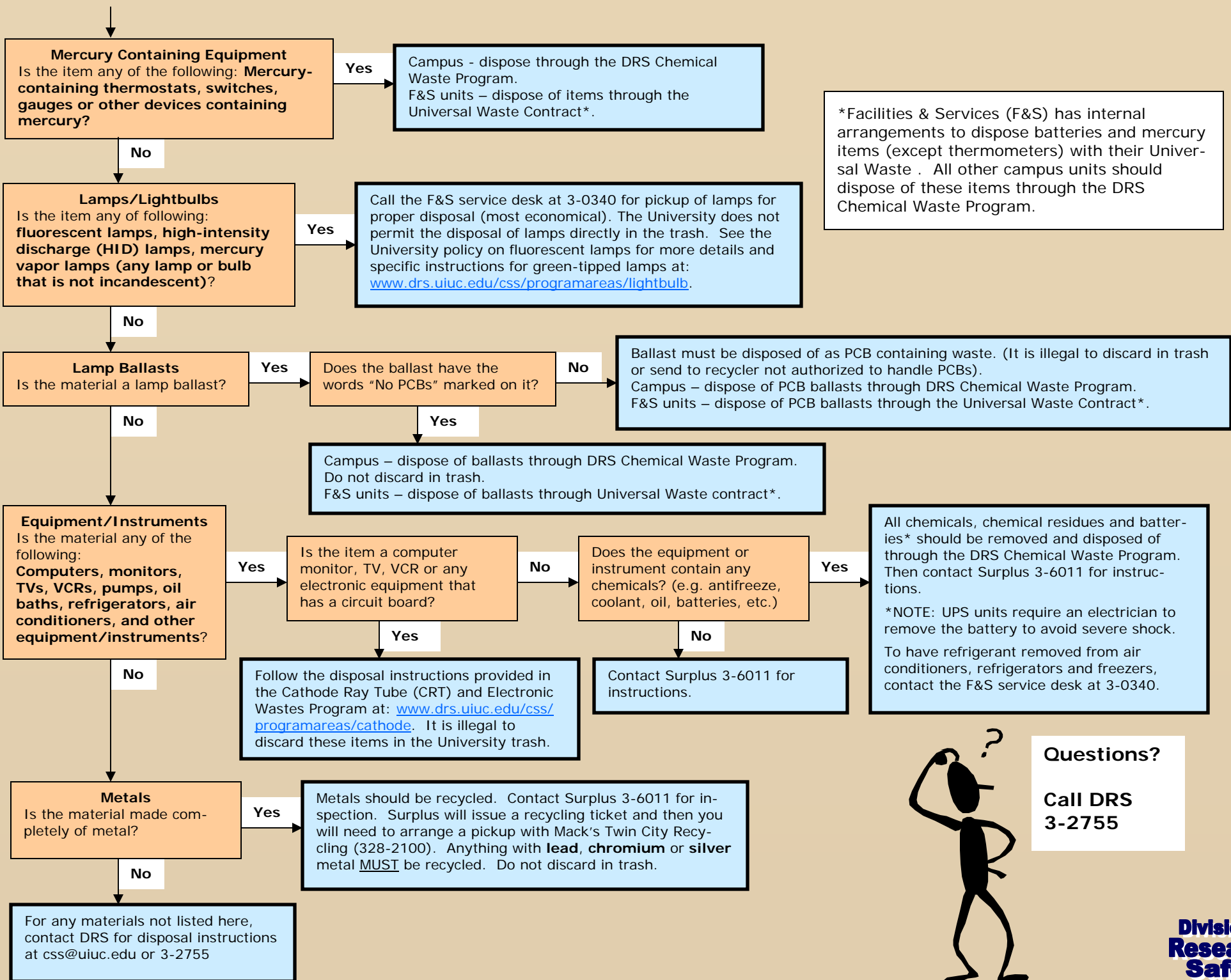
Begin at the words "start here" and follow the arrows that correspond to your answer for each question regarding the item you wish to dispose. Orange boxes have questions that will direct you to a blue box, which will have instructions for the item you wish to dispose of. Contact DRS with any questions at 3-2755.

→ Pickup forms and instructions for the DRS Chemical Waste Program can be found at: [www.drs.uiuc.edu/wasteguide](http://www.drs.uiuc.edu/wasteguide).

Click [here](#) for a black and white printable version.







**Questions?**  
**Call DRS**  
**3-2755**