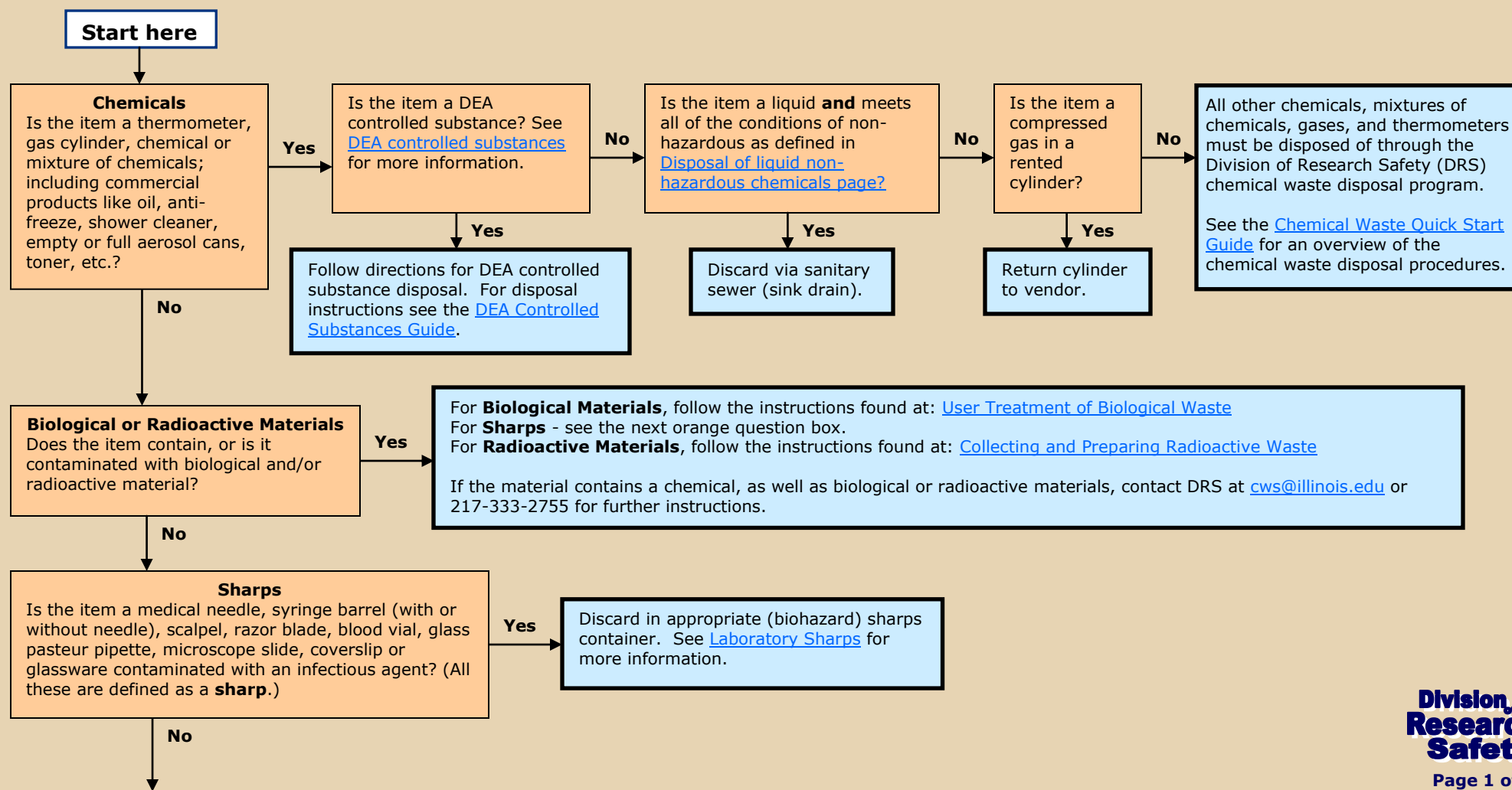


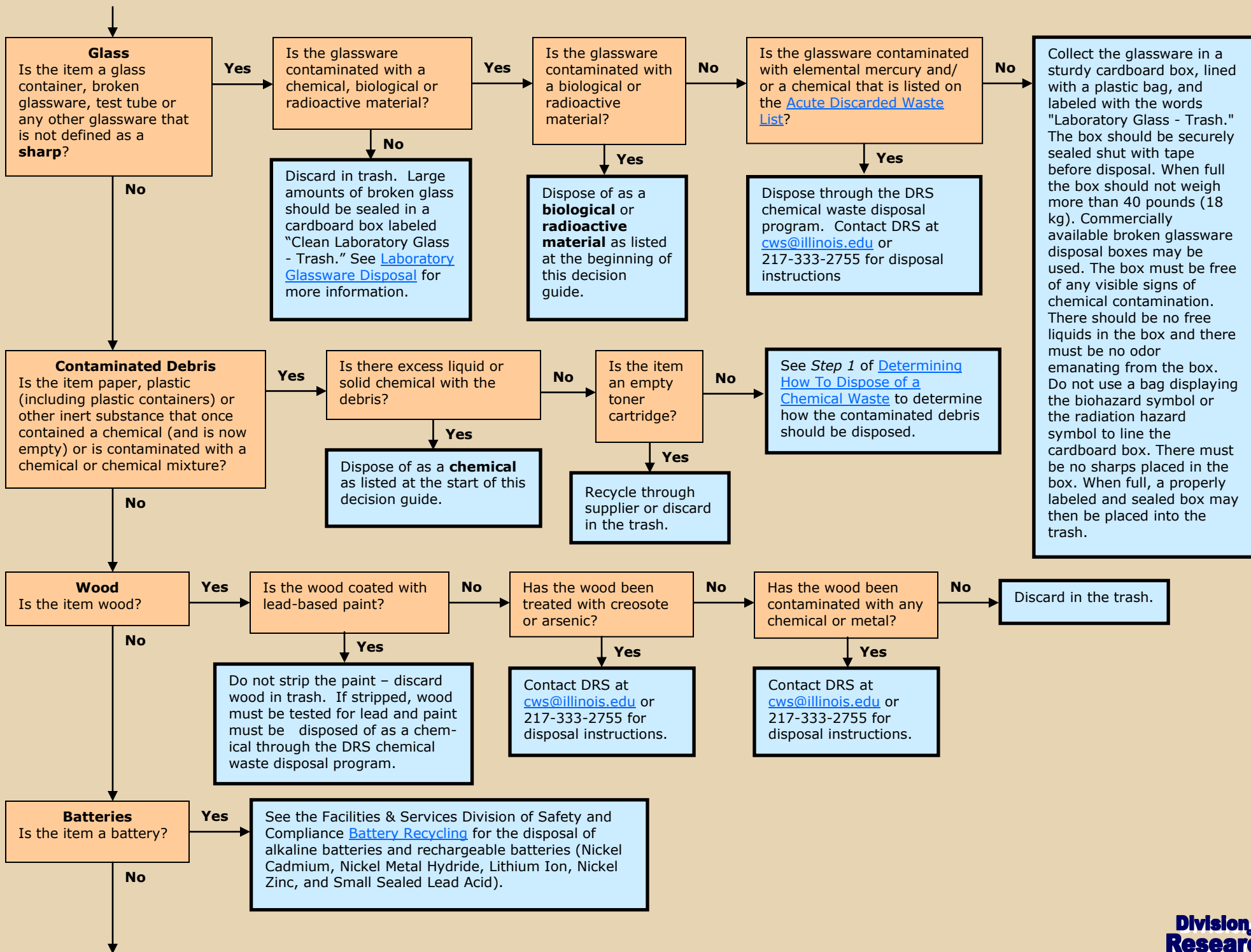
U of I Waste Disposal Decision Guide

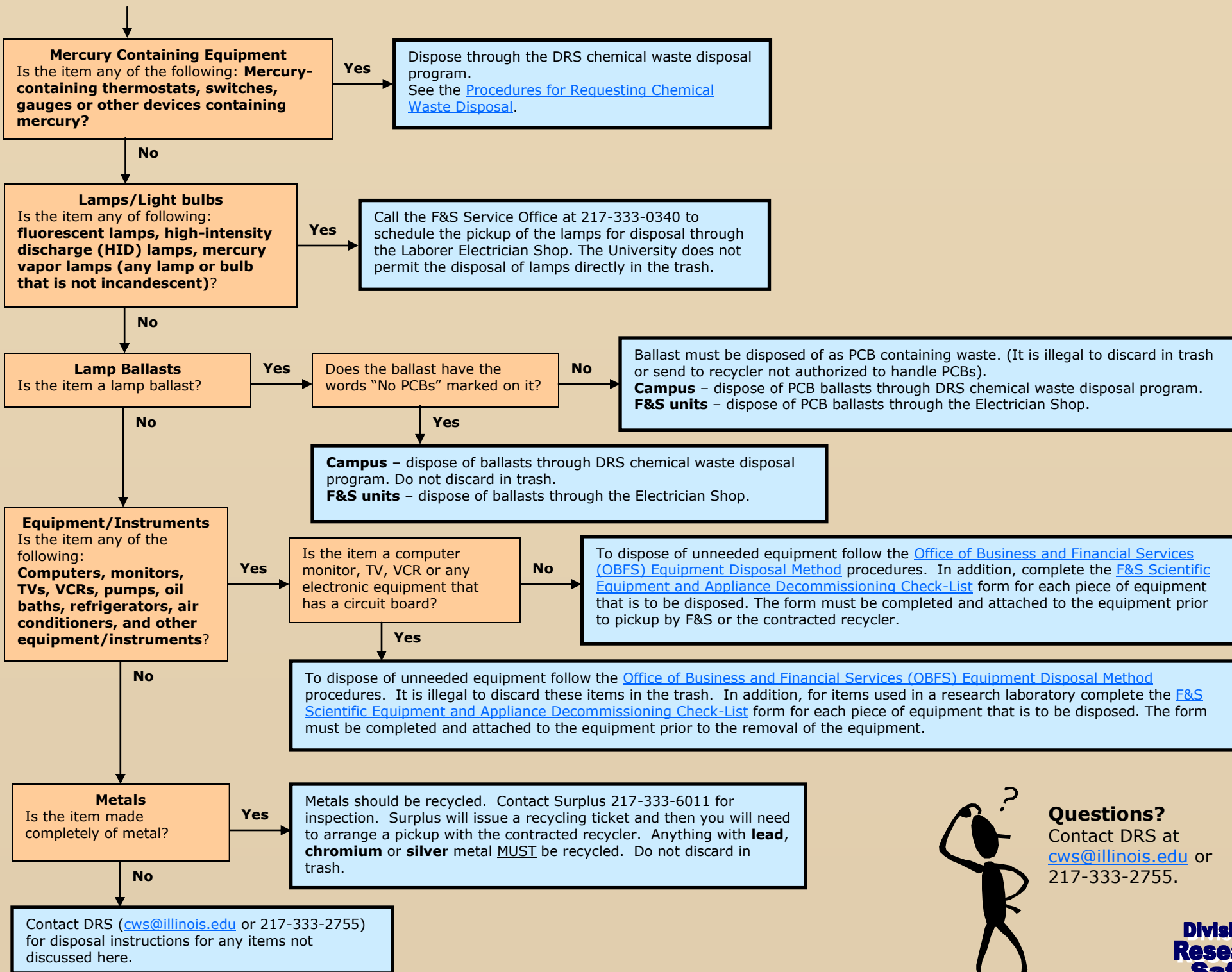
What items are covered by this guide: All items that are not completely made of paper, plastic, cardboard or food and items that contain or are contaminated with materials that are not paper, plastic, cardboard or food.

How to use the guide: Begin at the words "Start here" and follow the arrows that correspond to your answer for each question regarding the item you wish to dispose. Orange boxes have questions that will direct you to a blue box, which will have instructions for the item you wish to dispose.

Questions: Call 217-333-2755 or email cws@illinois.edu and ask for additional assistance from the Division of Research Safety (DRS) staff.







Questions?
Contact DRS at cws@illinois.edu or 217-333-2755.